

Carl Rogers

Integrity Interdisciplinarity Innovation

WAPCEPC Conference

New York City Columbia University July 20-24, 2016

Please join us for the 12th World Association for Person-Centered & Experiential Psychotherapy & Counseling conference (known as the PCE 2016 conference).

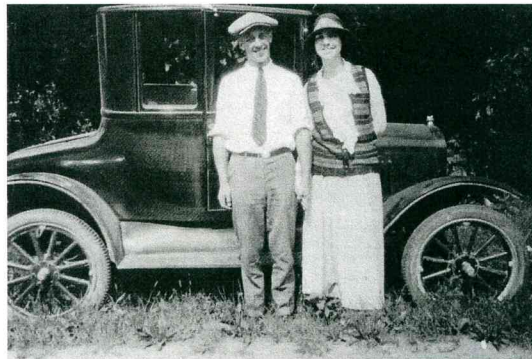
This conference has the potential to be a historical event. For the first time in the United States in over a decade researchers, clinicians, students, and academics representing the major tribes of the Person-Centered and Experiential Approaches will come together to explore the current state of our philosophies.

nypcrc.org/pce2016

CALL FOR PAPERS

The international Scientific Committee is issuing a call for papers. Please submit your presentation, workshop, roundtable, or pecha kucha relating to the conference theme or any topic related to Person-Centered and Experiential Psychotherapy or counseling.

[Details>](#)



"Carl and Helen were on their honeymoon traveling from Chicago to NYC, where he would attend Columbia University in 1924."

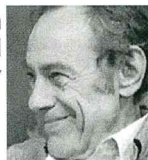
- Natalie Rogers

HIGHLIGHTED SPEAKERS



Jobst Finke
Person Centered
Therapy

Eugene Gendlin
Focusing & Experiential
Therapy



Sue Johnson
Emotionally Focused
Couples Therapy

Howard Kirschenbaum
Carl Rogers' Biographer



William Miller
Motivational Interviewing

Yoshihiko Moritomi
Meaning Oriented
Psychotherapy



Sandra Paivio
Emotion Focused
Therapy

Natalie Rogers
Expressive Arts
Therapy



More nationally and internationally recognized Person-Centered and Experiential presenters to be announced.

EGALITARIANISM IN PRACTICE

We have initiated a global network of barter, exchange, and giving to help bring our egalitarian ideals directly to the conference economy.

We have worked hard to ensure a low cost conference registration fee.

The official language of the conference is English but there will be language assistance for additional languages based on the needs of the participants, including translating larger plenary events as well as smaller support throughout.

PURSUE YOUR NYC DREAM TOUR

The PCE Conference will offer unique and personalized plans for exploring New York City. Please join us by making your suggestions on our Facebook page.

Local conference planners and participants will present various outings such as food and shopping tours of local neighborhoods, architectural tours, musical concerts, and a Staten Island Ferry trip, to name a few.

PRE CONFERENCE TRAINING

Motivational Interviewing with Bill Miller
July 18th and 19th, 2016

POST CONFERENCE ENCOUNTER GROUP

Facilitated by the staff of the La Jolla Program
July 24-27, 2016

REGISTER TODAY>



World Association for Person-Centered & Experiential
Psychotherapy & Counseling

www.pce-world.org

CONTACT US

nypcrc.org/pce2016
nypcrc@gmail.com